

ACHILLE

BOUTON POUSSOIR ANTI VANDALE

ITA

STRUTTURA: Pulsante in policarbonato con estetica in zama (cromo o oro), UNI EN 81-70(cifra in rilievo);

MONTAGGIO: il pulsante viene inserito frontalmente in uno scasso 32,2 e fissato tramite ghiera filettata;

SPESSORE PIASTRA: da 0,7 a 3 mm;

PARTE MOBILE: in policarbonato con superficie esterna in acciaio INOX AISI 304 con possibilità di finitura PVD oro;

LEGENDA: cifra in rilievo + braille (NON NECESSITA DI TARGHE AGGIUNTIVE PER IL BRAILLE)

CONTATTI: 1 o 2 microswitch.

TIPOLOGIE DI CABLAGGIO: morsetti e precablato.

ALIMENTAZIONE CORONA : (4 x LED) 12 o 24 VDC I=20mA.

CORSA PULSANTE: 1,2 mm.

VITA MEDIA:1.500.000 di attivazioni(24V,20mA)

GRADO DI PROTEZIONE: IP51. IP54 con molla siliconica e O-ring.



FRA

STRUTTURA: Bouton en polycarbonate avec l'esthétique en Zamak (chrome ou d'or), UNI EN 81-70 (chiffre en relief);

MONTAGE: Le bouton est frontalement inséré dans un une decoupe avec le diamètre de 32.2 et il est attaché par l'écrou fileté;

EPAISSEUR DE LA PLAQUE: 0,7 à 3 mm;

LA PARTIE MOBILE: elle est en polycarbonate avec la surface extérieure en acier INOX AISI 304 avec l'option pour le finition d'or sur le PVD;

LEGENDE: chiffres + braille en rélieuf (pas besoin des claue supplémentaires pour le braille);

CONTACTS: 1 ou 2 micro-switchs.

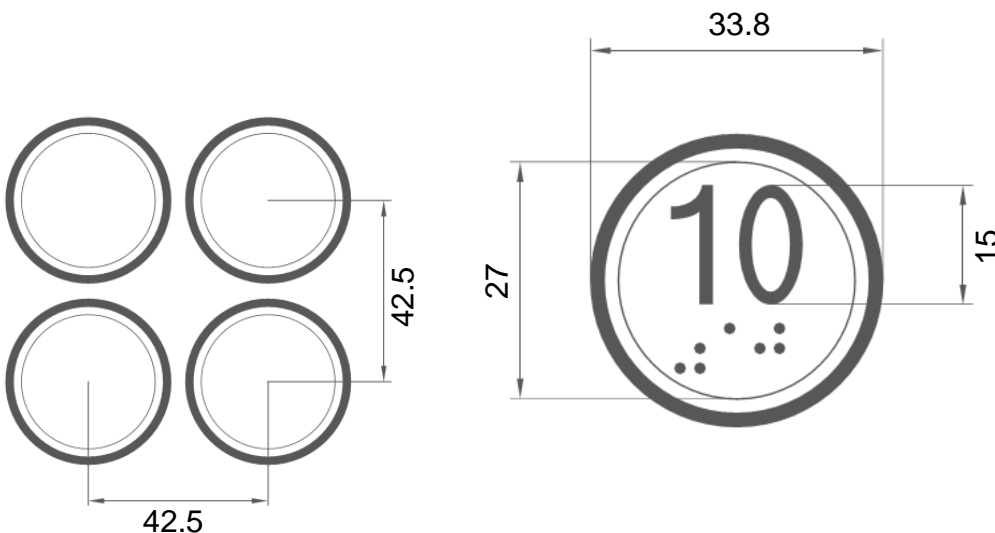
TYPES DE CABLES: les terminaux et les pré-câblé;

ALIMENTATION DE LA COURONNE: (4 x LED) 12 ou 24 VDC I=20mA.

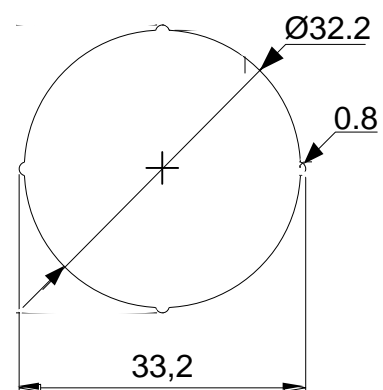
COURSE DU BOUTON: 1,2 mm.

VIE MOYENNE:1.500.000 activations(24V,20mA)

DEGRÉ DE PROTECTION: IP51. IP54 avec ressort en silicone et O-ring.



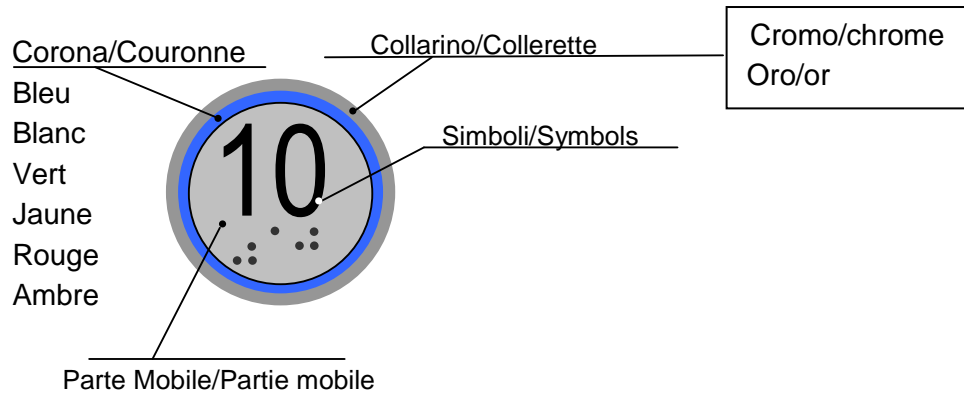
SCASSO/CUT OUT



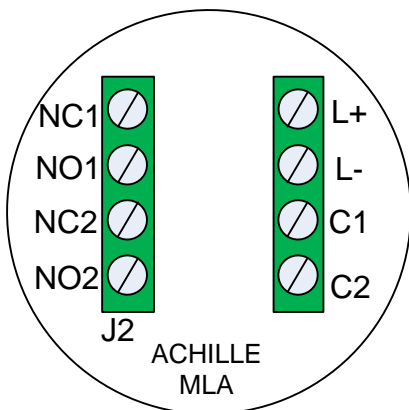
VEGA

ITALIAN STYLE FOR LIFTS

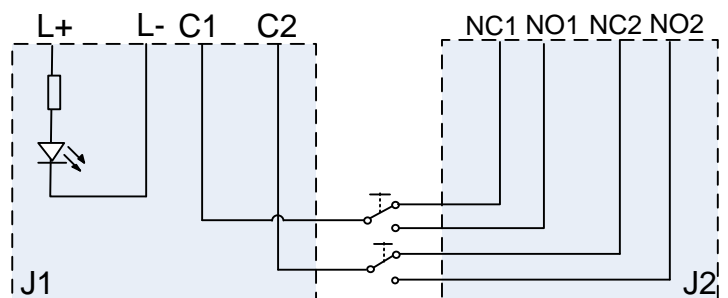
ACHILLE 2TH MLA



Connettore a vite/
Borne à vis



Schema di collegamento/
Schéma de câblage



J1

L+: corona (+) / couronne (+);

L-: corona (-) / couronne (-);

C1: comune contatto 1 / contact commun 1

C2: comune contatto 2 / contact commun 2

J2

NO1: contatto 1 normalmente aperto / contact 1 normalement ouvert;








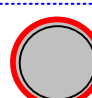







NC1: contatto 1 normalmente chiuso / contact 1 normalement fermé;

NO2: contatto 2 normalmente aperto / contact 2 normalement ouvert;

NC2: contatto 2 normalmente chiuso / contact 2 normalement fermé.

SIMBOLI E LETTERING / SYMBOLS AND LETTERING

Simboli/Symbols

< >		Apriporta/ ouverture de porte
> <		Chiudiporta / Fermature de porte
F		Freccia/Flèche
TEL		Cornetta telefono /Combinè Téléphonique
-7...36		Numeri/Numéros [-7,-1,0...36]
1/2...5/6		Mezzi piani/Demi-étages [1/2...5/6]
S		STOP
N		Neutro/Neutral
2F		Doppia freccia/ Double flèche
V		Ventilatore/Ventilateur
O		OTM
TLB		Cornetta telefono+Braille/ Telephon handset+Braille
INT		Interfono
A		Allarme/Alarme
AY		Allarme/Alarme

Lettering

A	B
C	CH
CP	DR
E	ES
G	G1
G2	K
KG	LB
LG	M
MZ	P
R	RB
RC	RH
RJ	S
SB	SS
T	U
UG	OH
1H	

LEGGERE ATTENTAMENTE LE AVVERTENZE SULLA PULIZIA !!!

I nostri pulsanti devono essere puliti solo ed esclusivamente con un
PANNO IN COTONE E ACQUA CALDA !!!



Evitare qualsiasi utilizzo di sostanze chimiche, soprattutto per le superfici in plastica.

Molti prodotti Vega sono realizzati in policarbonato, ABS, metacrilato o nylon 66. L'utilizzo di prodotti di pulizia contenenti anche in minima parte ammoniaca, idrocarburi, soda caustica, acido cloridrico, acido nitrico, acido acetico, alcol etilico, alcol metilico sono assolutamente vietati.

CAREFULLY READ THE WARNINGS FOR CLEANING !!!

Our push buttons must be cleaned only and exclusively with a
COTTON RUG and WARM WATER



Avoid every use of chemical substances, above all for plastic surfaces

Most of Vega products are made in polycarbonate, ABS, methacrylate or Nylon 66. The use of many cleaning products with caustic soda, hydrocarbons, hydrochloric acid, nitric acid, acetic acid, ethyl alcohol and methyl alcohol are strictly prohibited

VEGA

ITALIAN STYLE FOR LIFTS

VEGA STYLE LIFT s.r.l., Via Monte Vettore, 12 –

63845 Ponzano di Fermo (FM) Italy – P. Iva 02018560447

Tel. +39.0734.631941 – Fax: +39.0734.636098